



RETHINK

- CHANGE THE STORY
- CHANGE THE RULES

RESIST

- STOP THE BAD
- DIVEST FROM THE OLD ECONOMY

RESTRUCTURE

- INVEST IN THE NEXT ECONOMY
- BUILD THE NEW

BUILD THE NEW

RESOURCING CHANGE FOR A WORLD IN TRANSITION

THE 16TH ANNUAL JUST GIVING CONFERENCE

APRIL 19 - 21, 2016 | BERKELEY, CA



On March 3rd indigenous rights leader and woman human rights defender Berta Cáceres was murdered in her home in Honduras. This followed weeks of mounting threats and years of violence and aggression targeting indigenous peoples, women, small farmers and land and territory activists in Honduras and throughout Central America.

A leader in the Lenca community, Berta helped organize a powerful movement to stop the construction of the Agua Zarca dam and to protect the Gualcarque river basin. For more than a year the Lenca people maintained a human blockade to stop trucks from entering the dam construction site and thus halted its construction. Despite ongoing threats against her life (and after the murder of fellow leader of COPINH Tomás García in 2013), Berta remained steadfast in her commitment to protect Mother Earth and her community.

Honduras is one of the most violent countries in the world. US interventions have contributed to increased militarization and destabilization of democracy in the country. Since the 2009 US-backed coup that forced the democratically elected president out of office, crime, femicides and homicide have risen sharply – especially against women, LGBT people, indigenous peoples and human rights defenders.

In 2015 Berta won the Goldman Environmental Prize. In her acceptance speech she said, “We must shake our conscience free of the rapacious capitalism, racism and patriarchy that will only assure our own self-destruction. The Gualcarque River has called upon us, as have other gravely threatened rivers. We must answer their call. Our Mother Earth – militarized, fenced-in, poisoned, a place where basic rights are systematically violated – demands that we take action.”

Women are at the forefront of the struggle for climate justice, food sovereignty and the protection of our planet; and women human rights defenders like Berta are putting their lives on the line every day. Today we celebrate their courage and stand with them in struggle.

We dedicate the 2016 EDGE Funders Alliance Conference to Berta’s legacy, and to the struggles, resilience, creativity and leadership of women around the world.

Conference Theme

Build the New: Resourcing Change for a World in Transition

Today's headlines evoke a chaotic world edging closer to irreversible human and natural catastrophe. At the same time, new ideas and social energy aimed at systemic transformation in economics, policy, and culture inspire and encourage us. Evidence of emerging alternative economies proliferate, while new visions and models of cooperative management, collective ownership, and peer production point to changing paradigms of thought and action. We are learning from initiatives and social movements framed around the commons, food sovereignty, degrowth, intersectional feminism, new economics, Indigenous knowledge, and more. These rich and diverse experiences and experiments continue to inform our collective understanding of what can be achieved, and what is being accomplished already.

With those headlines in mind, however, we are called upon as grantmakers to move more decisively from inspiration to action – *to resource the change we see emerging in the world around us*. Along with our partners and allies, we must deepen and expand efforts to develop and foster grantmaking strategies that can help transform our world into a livable, global community that is responsible, sustainable and just for all.

This requires the active and full engagement of each one of us. Instead traditional workshops, this year's conference will be organized as a facilitated retreat in which participants talk *with* rather than at each other. "Engagement Lab" conversations - led by members of our community together with many of our most inspiring and thoughtful civil society partners, will be organized to engage, inspire and inform us, while deepening mutual understanding of just transition narratives and practice. If we are successful, our time together will enable us to be more effective and collaborative at moving resources to key sectors and constituencies working on systemic alternatives at the local, national, and international levels.

Our goals for the conference are simple (!). We want to deepen our understanding of the interconnected nature of today's challenges, and to highlight emerging intersectional strategies and movements. We want to expand our community of "leading edge" philanthropists committed to systemic alternatives. We want strengthen donor initiatives, affinity groups and collaboratives that move resources to structural change. During our time together, we will ask ourselves -

What does long term systemic change look like, across diverse sectors and geographies?

What key insights and recommendations do we want to share, with each other and with our wider community?

What collaborative opportunities exist or might we develop, for funders wanting to support structural reforms that can lead to systemic change?

We look forward to this time together, to discuss how we can "rethink, resist, restructure," as we reorganize within philanthropy to "build the new."

~ Samantha Harvey and Akwasi Aidoo, Just Giving 2016 Co-Chairs

ACKNOWLEDGEMENTS

EDGE Funders Alliance is a unique, diverse and passionately engaged community of donors, foundation officers and advisors from across the philanthropic landscape, with differing priorities and strategies but a shared commitment to addressing the systemic nature of today's social, economic and ecological challenges. By understanding our work within a global context, by forging strategic partnerships in and outside philanthropy, and especially through reflection and collaboration among our members, EDGE Funders works to increase resources for community well-being and transnational organizing in ways that promote justice and build lasting, meaningful change.

With your active participation and the support of our allies from around the world, Just Giving provides a unique space to better understand how grassroots communities and transnational movements are responding to global challenges, and how our grantmaking practices can make a difference. We look forward to engaging with you over the next three days.

EDGE Funders Alliance wishes to thank the following individuals and institutions for their invaluable contributions to the organizing of this conference:

Conference Planning Committee

Samantha Harvey, Overbrook Foundation (Co-chair)
Dr. Akwasi Aidoo, Humanity United (Co-chair)
Nicolas Krausz, Charles Leopold Mayer Foundation
Tanya Dawkins, CarEth Foundation
Cuong P. Hoang, Chorus Foundation
Shalini Nataraj, Ing Foundation

Conference Facilitator

Adrienne Maree Brown

Special Appreciation To:

Laine Romero-Alston, Jee Kim, Cara Mertes, and Chris Cardona of the Ford Foundation for generous support to the overall conference program.

Conference Volunteers:

Catherine Baumgartner
Annabelle Berrios
Patricia Kunrath Silva
Courteny Morehouse
Annette Jezierska
Abishek Hirpara
Leila Roberts
Isabelle Moenner
Coral Baldominos
Lourdes Inga
Jeff Conant

Engagement Lab Leaders

EDGE Funders would like to thank Engagement Lab Leaders for their contribution to the conference content and for inviting allies and partners to participate.

EDGE Funders Board of Directors

Terry Odendahl, Global Greengrants Fund
Nicolas Krausz, Charles Leopold Mayer Foundation
Nikhil Aziz, American Jewish World Service
Tanya Dawkins, CarEth Foundation
Jeff Furman, Ben & Jerry's Foundation
Leah Hunt-Hendrix, The Sister Fund
Matthias Fiedler, Bewegungsstiftung
Ellen Dorsey, Wallace Global Fund
Monica Enriquez-Enriquez, Astraea Lesbian Foundation for Justice
Samantha Harvey, Overbrook Foundation
Cuong P. Hoang, Chorus Foundation
Shalini Nataraj, Ing Foundation
Rose Longhurst, Edge Fund UK
Donal Mac Fhearraigh, Program Officer, Open Society Initiative for Europe

EDGE Funders Staff

Mark Randazzo, Executive Director
Lola Ibrahim, Managing Director
Tobias Troll, Director, EDGE Europe
Terence Blocker, Program Associate
Anthony Jones (Intern)
Katherine Yachuk (Intern)

Consultants

Linda Smith, Conference Organizer, GreenMeetings
Ananda Lee Tan

AT-A-GLANCE SCHEDULE

MONDAY, APRIL 18

9:00 am Pre-Conference Day-Long Training

TUESDAY, APRIL 19

8:00 Breakfast

10:00 Conference Opening

10:30 Plenary: Movement Visions – and Needs

12:30 Lunch

2:30 Reconvene in Plenary

3:00 Engagement Lab Convening

5:30 Reception and Ice-Cream Social

7:00 Dine-Arounds

9:00 Dance Party

WEDNESDAY, APRIL 20

7:30 Breakfast

8:45 Reconvene in Ballroom

9:00 Plenary Session: “System Change: Can Philanthropy Deliver?”

10:30 Break

11:00 Engagement Lab Convening

12:30 Lunch/EDGE Membership lunch meeting

2:00 Lab Presentations - Round 1

3:15 Break

3:30 Lab Presentations - Round 2

4:45 Break

5:00 Lab Presentations - Round 3

6:15 Free Evening or Join us for Movie Night at the Castro

THURSDAY, APRIL 21

8:00 Breakfast

9:00 Culture and Inspiration

9:30 Engagement Lab Convening

10:30 Break

11:00 Convene in Plenary

12:30 Final Closing

1:00 Lunch

1:30 Just Transition Tour

MONDAY, APRIL 18

Pre-Conference Day-Long Training

“Values in Action: Grantmaking for Social Justice” Presented by the Bay Area Justice Funders Network.

TUESDAY, APRIL 19

8:00 Breakfast

10:00 Opening (Ballroom)

- Co-Chairs Welcome and Opening Remarks: Samantha Harvey (The Overbrook Foundation) and Akwasi Aidoo (Humanity United)
- Facilitator's Welcome: Adrienne Maree Brown
- Introduction and Acknowledgments: Mark Randazzo (EDGE Funders)
- Intro Film: Build the New

10:30 Plenary: Movement Visions – and Needs

- Context and Framing: Ananda Lee Tan (EDGE Funders) in discussion with Michelle Mascarenhas-Swan (Movement Generation) and David Bollier (Commons Strategy Group)
- Civil Society leaders describe their visions for “building the new,” and discuss how philanthropy can contribute to promoting structural and systemic change:
 - Tom Goldtooth (Indigenous Environmental Network)
 - Graca Samo (World March of Women)
 - Cindy Wiesner (Grassroots Global Justice Alliance)
 - Kali Akuno (Cooperation Jackson)
 - Michelle Chan (Friends of the Earth)
 - Carlos Marentes (La Via Campesina)
 - Nnimmo Bassey (Health of Mother Earth Foundation)
- Community Engagement: Introductions, reflections on opening discussions, conference expectations

12:30 Lunch

Open meetings/Gender Justice Initiative Caucus

2:30 Reconvene in Plenary

- Dedication Ceremony: Honoring Berta Cáceres and COPINH
- Short film produced for Goldman Environmental Prize

3:00 Engagement Lab Convening

- Introduction to Lab Process
- Lab Caucus Round 1: Rethink/Resist/Restructure – Participants discuss what structural change would look like within their collective areas of interest, begin sharing information, insights and strategies to build up philanthropic infrastructure to strengthen the work

5:30 Reception and Ice-Cream Social

- EDGE Europe funders meeting (6 pm)

7:00 Funder-led Dine Around Conversations (Boat Club)

9:00 Dance Party

(Featuring Alternatiba's own DJ Madd Maxx's groove manoeva)

7:30 Breakfast

Open meetings/caucuses

8:45 Reconvene in Plenary

Cultural & Inspiration to welcome the day

9:00 Plenary Session: "System Change: Can Philanthropy Deliver?"

Fishbowl discussion about role, and limitations, of philanthropy to support transformational social change. Rajasvini Bhansali (IDEX) in conversation Kavita Ramdas (Ford Foundation), who will then be joined by other funders for additional comments and perspective:

- Chung-Wha Hong, Grassroots International
- Jennifer Near, The Libra Foundation
- Leah Hunt-Hendrix, The Sister Fund & Solidaire
- Leslie Harroun, Partners for a New Economy
- Leslie Lowe, Rockefeller Family Foundation
- Tatiana Cordero, Urgent Action Fund
- Karen Sai, African Philanthropy Network

10:30 Break

11:00 Engagement Lab Convening

- Lab Caucus Round 2: Resourcing Change to Build the New – Lab participants reconvene to deepen their analysis within themes, discuss funding strategies, and prepare collective presentations for Lab Sharing

12:30 Lunch/EDGE Membership lunch meeting

2:00 Lab Presentations - Round 1

- Climate Lab
- Investment/Regenerative Finance Lab
- Potential New Lab 1

3:15 Break

3:30 Lab Presentations - Round 2

- Economy & Economic Governance Lab
- Grassroots Movement Building Lab
- Agriculture Lab

4:45 Break

5:00 Lab Presentations - Round 3

- Culture and Narrative Lab
- Alternative Philanthropy Lab
- Potential New Lab 2

6:15 Free Evening

- **Or Join us for Movie Night At The Castro:** Premiere of "Not Without Us" at SF Green Film Fest - 9 pm
- Early bus to join Grassroots Global Justice pre-screening reception - 6:30 pm
- Possible late bus to go straight to the Castro Theater - 8 pm
- Buses from the Castro return to Berkeley Marina Hotel - 11:30 pm

THURSDAY, APRIL 21

8:00 Breakfast

- Open meetings/caucuses

9:00 Cultural & Inspiration

9:30 Engagement Lab Convening

- Lab Caucus 3: “What Should We Do, and How Should We Do It?” - Labs reconvene to assess what they’ve learned about ‘building the new,’ and discuss various ways forward.

10:30 Break

11:00 Convene in Plenary

- Cross-Pollination & Next Steps: Report-outs, Reflections, Assessments, Engagements, Announcements

12:30 Final Closing

- Conference co-Chairs Final Comments and Summation
- Cultural & Inspiration to close things out

1:00 Box Lunch

1:30 Just Transition Tour

- Post-conference visits with community groups working towards a systemic change (optional)

DISCUSSIONS WITHIN ENGAGEMENT LABS

The following is a listing of Lab conversations as originally proposed by lab leaders, but final participants and configurations will be developed together during the conference.

Culture & Narrative

Social Movements Require Stories

Social movements require stories; they are as important in changing ecosystems as organizing, research, and leadership. The question is no longer “should social justice funders invest in media?” but rather, what kinds of stories work for particular desired outcomes, audiences, and strategies? Join us to understand the role of story-based media in an “ecosystem of change” and explore – now that technologies and consuming patterns as well as the roles of artists and media makers have dramatically changed – what healthy collaborations are possible, and what skills and tools can help grantmakers make better informed decisions about what to fund and why.

Lab Leaders: Ellen Schneider, Active Voice, Ellen Friedman, Compton Foundation; with John Esterle, Bridgit Evans, Cara Mertes, Christie George, New Media Ventures; Taryn Higashi, Adey Fisseha, Unbound Philanthropies; Julie Parker Benello, Chicken & Egg; Robert Bray, NEO; and Steve Cohen, Chicago Media Project.

Earth Ethics for a Regenerative Economy

A Just Transition from the destructive “growth” economy requires outgrowing the dominant underlying extractive paradigm, based in an illusion of separation from nature. In this Lab we will explore how to strengthen resilience, through worldviews rooted in cultures of respect for life, while sustaining resistance to destruction. What does it take to remember we are part of a living system, subject to natural laws, and to embody a way of being in the world, founded in an Earth ethic, living with reciprocity and respect? We will learn from lived experiences with corn and salmon cultures here on Turtle Island. **Lab Leaders:** Liz Hosken, Gaia Foundation; Karen Swift, Swift Foundation; with Jim Enote, Indigenous Communities Mapping Initiative (Zuni tribe); Anne Docherty & Beth DeMaio, Storytellers Foundation; Gitxsan First Nation; Liz Hosken, Gaia Foundation; Karen Swift, Swift Foundation; and Steve Ellis, Tides Canada Foundation.

Role of Sacredness and Culture in Deep Social and Ecological Transformation

To promote equity and create a better framework that initiates social and ecological transformation, the philanthropic community must begin shifting its focus towards creating movement within the context of two things: culture and sacredness. While there is broad consensus culture plays a critical role in philanthropy, minimal attention has been paid to sacredness when analyzing interconnectedness and social change movements. The terms culture and sacredness might seem too obscure or esoteric to some, but this lab will explore why these things matter, and how a basic understanding can be applied to grantmaking processes to allow for a first step to initiate systemic change. **Lab Leaders:** Natasha Hale, Colorado Plateau Foundation; with Sam Tucker, David and Lucille Packard Foundation; and China Ching, Christensen Fund.

Grassroots Movement Building

Equity as a Strategy for Impact in Policy and Funding

Just Transition principles and grassroots leadership are critical to developing meaningful national policy, but funders must build power together, with leadership from movement partners and shared understandings of what “equity,” “justice” and “grassroots” really mean. This lab will look at how those frameworks have practical, measurable implications for policy outcomes and will introduce a new grassroots-led Fund to shift resources to grassroots sector, hashing out details with other funder collaboratives trying to move money to the grassroots. **Lab Leaders:** Samantha Harvey, Overbrook Foundation; with Jose Bravo, Just Transition Alliance; Antonio Lopez, Little Village; Melissa Lin Perrella, NRDC; Cindy Wiesner, Grassroots Global Justice Alliance.

The Essential Role of the Grassroots in System Change

Discuss different definitions of the “grassroots” and examples of the role of the grassroots in system change. Build consensus around an eco-system model of a healthy grassroots culture and explore multiple models of the role of the grassroots in larger scale system change. Make the case that healthy grassroots ecosystems are an essential component of movement building and large scale system change. Explain why and how the grassroots can be a regular and continuing component of all funding strategies and provide an overview of existing grassroots funding infrastructure and ongoing infrastructure gaps. **Lab Leaders:** Cheryl King Fischer, New England Grassroots Environment Fund; with Benno Friedman, Cloud Mountain Foundation; Sarah Stranahan, Stranahan Foundation; Terry Odendahl, Global Greengrants Fund; Hugh Hogan, North Star Fund; Julia Dunderf, New England

Grassroots Environment Fund; and Leslie Meehan, Threshold Foundation.

Lessons and Future of Global Movement Building, with case studies of La Via Campesina and the World March of Women

While social movements have made progress building global movements and strengthening their international infrastructure and strategies, philanthropy has been slow to develop appropriate funding strategies to support these developments. We will look at two of the most effective and powerful global movement organizations in the world — La Via Campesina and World March of Women to learn about how they built powerful bases and unity among diverse constituencies, how they link and integrate local work and campaigns to national, regional and global level work, and how they envision further strengthening the global movement in the future.

Lab Leaders: Chung-Waha, Grassroots International; with Maria Koulouris and Lauren Davis, 11th Hour Project; Melanie Adcock, CS Fund; Terry Odendahl and Allison Davis, Global Greengrants Fund; and Vini Bhansali, IDEX.

Digital Organizing: a New Road to Social Change

A growing number of progressive next-generation organizing groups around the world, born in the internet era, are harnessing digital activism to impact fundamental equity and justice issues — from climate change, to trade, to food security, to workers rights in global supply chains. These tools are leveraging hundreds of thousands of people in both online and offline activity, and the digital space is increasingly the infrastructure of movements. But because digital strategies fall outside or cuts across traditional funding buckets, digital organizations and funders often aren’t engaging in each others’ work effectively. Come strategize about how to change that!

Lab Leaders: Julie Menter, New Media Ventures; with Taren Stinebrickner-Kauffman and China Brotsky, SumOfUs.

Investments & Regenerative Finance

Impact Investing and a Just Transition

This session will consider how foundation investment practice can contribute to and be informed by a just transition; explore perils of impact investing and ways it can be grounded in equity and social justice to be a more useful social change tool for funders; create a more nuanced understanding of ways capital can be deployed for mission and a clear sense of the concerns that have emerged; explore how reparations can and must be explored. **Lab Leaders:** Jennifer Near, The Libra Foundation; with Andrea Armeni, Transform Finance.

Explorations In Indigenous Philanthropy, Loans, and Investments

Experience a living example of how a collaborative of different philanthropic institutions with different — but closely related — missions, resources, capacities, and goals works together toward making systemic change by sharing power and the power of dreams (the difficult moments as well as the easy ones); Construct your own map of ‘Relatives;’ Engage in dialogues and ideas being shared by Indigenous leaders, executives and program officers, donors and board members. Safely imagine and strategize about what might happen if power relationships and decision-making roles change in philanthropy. **Lab Leaders:** Jaune Evans, Tamalpais Trust; Sanjay Kabir Bavikatte, The Christensen Fund; with Jen Astone and Karen Swift, Swift Foundation; and Dr. Myrna Cunningham, Indigenous Ways of Knowing and Learning Initiative.

Community Control Over Finance and the Means of Production

This conversation will center communities seizing greater control of finance and the means of production to have the political, economic, and cultural power to ‘build the new.’ Initiatives across the country— and the world—bring together finance and worker control so community members make decisions on ways to sustain their livelihood. Under the premise that systemic change requires financing and the means of production be in the hands of community members, we’ll discuss how philanthropy can become more focused on (re)investing investments in communities, and how these investments can be aligned with grant making to build local capacity. **Lab Leaders:** Cuong Hoang, Chorus Foundation; with Brendan Martin, The Working World; Ed Whitfield and Marnie Thompson, Fund for Democratic Communities; and Gopal Dayaneni, Movement Generation.

Economy & Economic Governance

Getting Fiscal

The last few years have seen the emergence of collaborative efforts across the globe to tap the transformative power of human rights to bring about more sufficient, equitable and accountable public resourcing, as an alternative paradigm to the prevailing dogma of austerity. Tax justice and development advocates have long drawn attention to the role that tax evasion and regressive fiscal policies play in fueling inequality and undermining sustainable development. They are now turning increasingly to human rights to provide a legitimizing language for their demands, as well as new avenues for accountability. Meanwhile, vanguard human rights organizations working in the fields of economic and social rights and gender equality have

been deepening their engagement with tax and budget policies, given the critical role these play in realizing rights and reducing inequality. We would like to share and explore with colleagues explore how the principles, instruments and mechanisms of human rights can be deployed in efforts to bolster the resourcing, redistributive and accountability functions of taxation. **Lab Leaders:** Lesley Carson, Wellspring Advisors; with Ignacio Saiz, Center for Economic and Social Rights; Liz Nelson, Tax Justice Network; and Grazielle David, INESC, Brazil

Global Trade Governance Alternatives

Building Partnerships for the Next Economy

How can funders work together to take more risk and support greater innovation for change? How can we successfully transform an economic system run amok – a system that is extracting wealth from our future and threatening to collapse the ecological systems upon which our survival depends – so that its underlying purpose becomes environmental and human wellbeing? Can we do better at toppling the roots causes of biodiversity loss, climate change, over-fishing and inequality? How can we help facilitate democratic models of wealth building that preserve and protect our biosphere and that generate resilient, thriving communities, both locally and globally? Join us to discuss how grantmakers in Europe and the US are beginning to work together to build a dynamic and collaborative community of donors and practitioners to tackle these issues. Please come to this session ready to share your grandest ideas, your favorite projects, your biggest failures and your vision for the future. **Lab Leaders:** Leslie Harroun, others TBD.

Growing the Fourth Sector: Accelerating the Transition to a Sustainable, Inclusive, Resilient Economy

Systemic problems require systemic solutions. Many of today’s critical challenges are downstream consequences of an unsustainable model of development that has become the global norm. The urgency, scale, and interconnectedness of these challenges calls for fundamental structural change, not just incremental improvement. Fortunately, such a change has been organically unfolding over the past few decades. A rapidly growing fourth sector of the economy has been emerging, comprised of “for-benefit” enterprises that tackle social and environmental problems leveraging market-based approaches. In this lab, we will explore how philanthropy can shape and accelerate this emergent movement and unleash a wave of entrepreneurship and innovation to tackle the critical challenges of the 21st century at scale. **Lab Leaders:** Heerad Sabeti, Fourth Sector Network; with Cole Wilbur, David and Lucile Packard Foundation; and Scott Rehmus, One Pull Solutions.

Understanding and Supporting the Commons

The Commons provides a practical, non-ideological way of addressing the failures of the neoliberal economy and the modern bureaucratic state (“the market/state”), and their inability to meet ecological needs and assure social justice. Existing Commons alternatives (collectively managed housing, water systems, farmland, Internet communities, alternative currencies, and participatory governed institutions) show that system change is not utopian. These efforts are mostly under the radar, scattered, and under-resourced, and philanthropic support is needed to strengthen the political and cultural foundations of this new paradigm and to spread practices and social innovations among commoners around the world. **Lab Leaders:** Nicolas Krausz, Charles Leopold Mayer Foundation; with David Bollier, Commons Strategies Group.

The Sustainable Development Goals and the Role of the Business Sector in bringing about Transformational Social Change

This discussion will provide information on SDGs and to exchange ideas on how the philanthropy sector can encourage the business sector to shift its core business practices to help achieve them. Learn about the SDG Philanthropy Platform, an innovative and collaborative partnership to raise awareness within the philanthropy sector about the Sustainable Development Goals (SDGs) and ways to contribute to their achievement; and to increase understanding by the UN system, governments and civil society of the role and potential of the philanthropy sector to make faster, deeper progress in achieving the SDGs. **Lab Leaders:** Radhika Shah, Stanford Angels and Entrepreneurs; Heather Grady, Rockefeller Philanthropic Advisors; Shalini Nataraj, Ing Foundation.

Climate & Environment

Bridging the Divide Between Large Scale Financing and Community-driven Approaches to Coping with Widespread Climate Vulnerabilities

Increasing numbers of national, regional and international financing mechanisms are being established to support climate change mitigation and adaptation projects and programs. Yet many Indigenous Peoples and Local Communities most impacted by climate change find it difficult to access these funds at a time when they are most critical. There is an urgent need to bridge the divide between large scale financing and the community-driven approaches to coping with widespread climate vulnerabilities associated with food, water, land and livelihoods. Together with our partners in the philanthropic community, we seek to create a systemic

shift in the way climate financing for adaptation is defined, accessed and distributed so that Indigenous and local knowledge and community needs are better recognized, supported and integrated into regional and national climate planning efforts. **Lab Leaders:** China Ching, Christensen Fund and Anne Henshaw, Oak Foundation; with Joan Carling, Asia Indigenous Peoples Pact; and Sanjay Bavikatte, Christensen Fund.

Indigenous Rights Approach to Climate Justice and Just Economies

The biggest obstacles standing in the path of the largest fossil fuel expansion projects are Indigenous Rights. Environmental justice and Indigenous movements have been collaborating more successfully to protect our land, water, and sacred sites. This success relies heavily on the fact that Indigenous communities (across North America) hold unique legal land and resource rights recognized by the highest levels of government. The recent Indigenous Climate Action Summit developed an Indigenous Peoples’ strategy on climate change policy, and laid the foundation for future collaboration through an Indigenous Climate Action Plan. This session will create a deeper understanding on the effectiveness of building power using an Indigenous Rights approach in order to transform the climate justice movement. **Lab Leaders:** Ginger Hintz, Women Donors Network; with Nina Simons, Earth Circle co-chair; Eriel Deranger, Athabasca Chipewyan First Nation; and Wahleah Johns, Black Mesa Water Coalition.

Gender and Climate Change: Funding Across Movements for Greater Impact

Globally, women experience some of the most acute impacts of environmental degradation and climate change. At the same time, women are leading initiatives that address the root causes of and develop resilience to the detrimental impacts of climate change. Unfortunately, lack of access to funding limits women’s ability to pursue their climate solutions and exercise their rights. Despite the great need, funding at this intersection of women’s rights and climate change is minimal. This engagement lab will explore how funders can build greater collaboration between the women’s and environmental movements with the goal of a stronger, more unified movement that approaches issues such as climate change and women’s rights more holistically. We seek to develop more effective approaches to address needs on the ground and, in turn, have a greater impact on building deeper, more systemic change. We will not bring grantee partners, but other funding partners. **Lab Leaders:** Emilienne Aulina, International Network of Women’s Funds; with Ursula Miniszewski, Global Greengrants Fund; Liz Hosken, Gaia Foundation.

Food & Agriculture

Seeds of Power

The Global Alliance is in the process of identifying strategic funding opportunities at a cross-regional level to strengthen community-based seed systems that are climate resilient and maximize agrobiodiversity. We seek to actively collaborate with funders to strengthen farmer efforts and advance policy advocacy in this area. **Lab Leaders:** Yael Falicov, Global Alliance for the Future of Food; with Daniel Moss, AgroEcology Fund and Karolo Aparicio, EcoViva.

Climate Resilience and Sustainable Food Production

With international colleagues in attendance, a representative from our Honduras partner in USC Canada's decades old Seeds of Survival (SoS) program, and a young farmer from our new Canadian program, we hope to:- inspire discussion about innovative biodiversity-based, agro-ecological seed and food production that not only keeps farmers on the land but strengthens social cohesion, women's leadership, and intergenerational collaboration;- propose field-based strategies for climate resilience that can inform global policy change, as well as regional farming practices- challenge conventional thinking about North to South knowledge and resource flows. **Lab Leaders:** Susan Walsh and Jane Rabinowicz, Universalist Service Committee.

Farmworkers Organizing at the Intersections of Food Sovereignty and Justice

The transition towards an equitable food system requires that we recognize and facilitate the leadership of groups accountable to the two to three million farmworkers in the US. The majority of farmworkers are young, undocumented men of color, many of whom have settled with families in urban and peri-urban communities. Even though their labor is critical to our daily lives, they are still largely invisible and vulnerable, suffering high rates of food insecurity, pesticide exposure, wage theft, and stress. In recent years, farmworker organizations and unions have leveraged visibility, asserted power and won change by creatively linking their struggles to new, and often unlikely, allies. Strategies include reformist campaigns, building community-controlled institutions, and creating alternative markets. This Lab conversation will explore ways to build support for farmworkers' efforts to advance long term strategies to build power for systemic change. **Lab Leaders:** Kolu Zigbi, Noyes Foundation; with Judy Hatcher, Pesticide Action Network

Donor Organizing & Philanthropic Practice

Funding Indigenous Peoples: Strategies for Support

This Lab will explore different funding models and the reasons why direct giving to Indigenous communities is the most cost effective way to reach program goals. It will offer practical tips to overcome the most common obstacles to supporting Indigenous peoples. It will feature first-hand accounts from both grantees and donors on how to structure and administer projects with Indigenous communities to meet both parties' objectives. It will explore why ancestral knowledge is the key to the Earth's future. **Lab Leaders:** Evelyn Arce, International Funders of Indigenous Peoples; with Froyla Tzalam, Sarstoon Temash Institute of Indigenous Management in Belize; and Sonja Swift, Swift Foundation.

Community-based grantmaking: Transforming the Power Dynamics in Philanthropy

There are a growing number of organizations and projects working to build new methods of grantmaking that give decision making authority for grant funds to community members or to the grant recipients directly. These methods of grantmaking leverage community wisdom while building collaboration, trust and mutual accountability among grantees and funders. RSF Social Finance has been experimenting with one method of community based grantmaking called Shared Gifting for five years now. Based on our experience working with this model, we would like to explore some of the highlights and challenges of working with this and other collaborative models of grantmaking. We would also like to lead a discussion around unpacking some of the assumptions that exist in our traditional philanthropic paradigm, specifically the assumption that those with wealth know best how to use it. We invite organizations that have moved beyond notions of traditional philanthropy and instead are aiming to build new models that share or give decision making authority over to those working on the ground in communities to join us in the conversation. **Lab Leaders:** Kelley Buhles, RSF Social Finance; with Jaune Evans, Tamalpais Trust & Indigenous Ways of Knowing and Learning, and Arianna Shaffer, Indie Philanthropy.

We are Turning in Our Begging Bowls: Creating a New Social Impact System

This lab will address inequality in the nonprofit / philanthropic sector by defining the building blocks for creating new social impact ecosystem. Traditionally, the sector is viewed in a linear form – from grantor to grantee to recipient. This new

ecosystem will expose the challenges and limitations of this linear process, and introduce a more robust, accessible and equal system that moves us away from the “begging”, top-down structure that currently permeates the philanthropic sector. **Lab Leaders:** Stephanie Heckman and Melanie Bielefeld, One World Children’s Fund; with Chilungu, Abhay Tewari, Evelyn Nassuna.

Courageous Philanthropy: Funding Challenging Issues

Supporting systemic change often requires funding issues that are considered risky, political, or unpopular. To foster positive transformation around the globe, funders must address the root causes of complex issues with innovation, collaboration and courage. This lab offers funding approaches for an increasingly interconnected yet challenging world, from strengthening political will for change to relying on local communities to guide initiatives. The Rockefeller Brothers Fund will be joined by its grantee Just Vision, an organization that increases the power of Palestinians and Israelis working to end the occupation and build a future of freedom, dignity and equality in the region. **Lab Leaders:** Ariadne Papagapitos, Rockefeller Brothers Fund; with Suhad Babaa Just Vision.

Funders as Fierce Allies for a Just Transition: Exploring Power and Inequity in Progressive Philanthropic Alliances

Examining power and inequity can be a daunting, risky, messy, and decidedly non-linear outside-in process. We often start by analyzing power dynamics and structural oppression out there and quickly find that it’s in here as well. History shows that grassroots-powered social movements are the most effective means for dismantling inequitable systems and erecting new socially just ones. Yet, philanthropy often stops short of effectively utilizing its resources and privilege to transform the very power dynamics that perpetuate the

systems it purports to change. In this dynamic engagement lab, we’ll explore the questions: What personal and collective shifts are needed among funders to catalyze their power and privilege into sustainable and effective allyship for grassroots-led social movements seeking to transform systems perpetuating injustice, poverty and environmental instability? **Lab Leaders:** Alison Cohen, Why Hunger; with Gerardo Marin, Rooted In Community, Kolu Zigby, Jesse Smith Noyes Foundation.

Reimagining Funding with the Indie Philanthropy Initiative

The Indie Philanthropy Initiative is a creative disruption to the status quo of funding. Our Engagement Lab will be a space to explore funding practices that are often overlooked in mainstream philanthropic avenues. Indie Philanthropy is about looking closely not just at what gets funded, but also who makes decisions and how funding is done. This Lab will be about breaking open the space for funders, organizations, and the philanthropic culture at large to have their values and funding match up. **Lab Leaders:** Arianne Shaffer, Indie Philanthropy; with Alissa Hauser, The Pollination Project; and Kelley Buhles RSF Social Finance.

The End of Philanthropy? Creating Alternative Revenue for Organizing and Advocacy

This engagement lab will address the question of the limitations of philanthropy and how we can use philanthropy to create alternative revenue streams for organizing. The Worker’s Lab has been pioneering this, investing in non-profits in ways that build out their revenue model, making them ultimately less dependent on philanthropy. We want to explore how we can ramp up this work and use philanthropic resources to ultimately diminish the dependence on philanthropy. **Lab Leaders:** Leah Hunt-Hendrix, Solidaire; with Carmen Rojas, The Workers Lab.

SIDE OFFERINGS AT JUST GIVING

Healthy Conference Center

Tuesday, 2:00 - 3:00 PM

Wednesday: 12:30 - 2:00

Location: Building 5 - Santa Barbara Rm

Feeling Conference Fatigue?

Recharge yourself at the Healthy Conference Center with Acupuncturists Without Borders (AWB). EDGE Funders Alliance and AWB have teamed up to create the Healthy Conference Center where you can enjoy free community-style acupuncture and a brief, revitalizing Qigong session (relaxing stretching and moving). Changing the world begins with you – help yourself feel more productive, enthusiastic, and energized during the conference!

Community style acupuncture treatments are done in a group with participants fully -clothed and can take from 20 to 45 minutes.

Community Acupuncture Treatments:

Done sitting in chairs with needles on the ears only – wear your regular conference clothes.

Acupuncturists Without Borders provides community-style acupuncture to build resiliency, help heal trauma and support healing justice for those who have been marginalized. Free treatments are provided to communities that are in crisis as the result of disaster, human conflict, human injustice, environmental devastation and more. The organization began in 2005 in response to Hurricane Katrina, and gave over 8,000 free acupuncture treatments in Louisiana for PTSD, depression, and stress. AWB now has a nationwide community clinic program with dozens of free clinics located around the U.S. that help heal the wounds of war, with treatments for veterans and their families, refugees and others. AWB volunteers are also treating local people and training healers in Haiti, Nepal, Chile, Ecuador, Mongolia, and Mexico.
www.ACWB.org Info

Movie Night at the Castro Theater

Wednesday, April 20 at 8:00 pm

"Not Without Us" World Premiere at the San Francisco Film Festival

"Not Without Us" is a full length documentary following 7 activists from around the world as they organize around the Paris COP. The film, made by our long time partners with Kontent Films, has been selected as the closing film featured at the San Francisco Film Festival. "Not Without Us" will have its premiere at the beautiful and historic Castro Theatre. Lead characters in the film - Cindy Wiesner with the Climate Justice Alliance in the US, Nnimmo Bassey with Health of Mother Earth Foundation in Nigeria, Pat Mooney with ETC in Canada and Max Rademacher with Alternatiba in France" will be with us. It will take up to an hour to travel from the conference venue in Berkeley to the Castro Theatre.

Transportation provided. Please inquire at the registration desk.

Communities Leading a Just Transition - Learning Tour in Richmond

April 21, 2016 at 1:30 pm (Transportation Provided)

After years of activism and organizing, diverse actors in Richmond are creating a more democratic and regenerative local economy, from local food systems to transit and energy. Join us on a learning tour to meet with local community partners across key sectors who are building the new and moving resources in coordinated way to implement the Just Transition strategy framework.

Allow your heart and imagination to take a journey and see what a Just Transition looks like in community!

Reception and Ice-Cream Social

Tuesday, April 19th
5:30 pm

Dine Arouds (Berkeley Boat House)

Tuesday, April 19th
7:00 pm

Dance Party!

Tuesday, April 19th
With Alternatiba's own DJ Madd Maxx's groove manoova
9:00 pm at the Berkeley Boat House

ENGAGEMENT LABS PROCESS & FACILITATION GUIDE

Our gathering is meant to engage, inspire and inform, while deepening mutual understanding of just transition narratives and practice, allowing us to learn from each other and to be more effective and collaborative at moving resources to key sectors and constituencies working to promote systemic alternatives. Rather than traditional workshops, much of our work will be done through thematic "Engagement Labs," which will convene daily. Three dozen proposed topics organized within the following seven Engagement Labs:

"Lab Leaders" - funders and allies who were part of the proposed discussions process - will help orient and facilitate Labs, although all conference participants are invited to bring their views and initiatives into these discussions, by joining a Lab on the theme of most interest to them. Up to two additional Labs may be formed, and will convene along the following lines:

Tuesday, 3:00 to 5:30 pm

- **Introduction to Lab Process** (45 mins): Adrienne facilitates discussion of the process, and organizes participants into existing - or if needed, newly created - Labs.
- **Lab Caucus Round 1** (2 hrs): Rethink/Resist/Restructure – Begin sharing information, insights and strategies, using the following guiding questions:
 - *What does long term systemic change look like within our collective areas of interest ?*
 - *What initiatives are already moving us in that direction? (Get specific about the collaborations and processes that feel right, that we want to support)*
 - *How do we build up philanthropic infrastructure to strengthen the work, and where are our edges for growth and learning (i.e. what is NOT working, yet)?*

Wednesday, 11:00 to 12:30 pm

- **Lab Caucus Round 2** (90 mins): Resourcing Change to Build the New – Deepen analysis, discuss funding strategies, and prepare collective presentations for Lab Sharing. Guiding questions:
 - *What do we need to share with other participants? (Core issues and concerns, best practices, biggest questions, forward-looking initiatives and collaborative opportunities...)*
 - *How should we present all this during Lab presentations this afternoon?*
- **Lab presentations** (3rounds x 3; 75 mins each): Labs share and receive input on their analysis of core issues, highlight innovative programming, and provide information on funding strategies in support of system change work in this sector.

Thursday, 9:30 am

- **Lab Caucus 3:** "What Should We Do, and How Should We Do It?" - Labs reconvene to assess what they've learned about 'building the new,' and discuss various ways forward. Guiding questions:
 - *What can we take forward as new institutional and individual practice to reshape our field?*
 - *What do we want to communicate about our work together, here and to those in our field who are not at Just Giving:*
 - *What key **insights** do we want to share?*
 - *What are our **recommendations** for funders working within this area?*
 - *What collaborative **opportunities** exist or will be explored, for funders wanting to support structural reforms leading to systemic change?*

Each Lab is being assigned a volunteer to assist in organizing and note taking. Insights, recommendations and opportunities for collective action that emerge out of Lab discussions will be recorded, and become part of a formal report that will summarize discussions, share recommendations and make a case for how to "resource change for a world in transition."

A Just Transition and Progressive Philanthropy¹

By David Bollier

EDGE Funders Alliance / February 2016

The weak reforms enacted after the 2008 financial crisis; the ineffectuality of climate change negotiations over the course of 21 years; the growing wealth and income inequality of our time. Each represents a deep structural problem that neoliberal markets seek to ignore or minimally address. As more Americans come to see that the state is often *complicit* in these problems, and only a reluctant, ineffectual advocate for change, there is a realization that seeking change *within* DC beltway politics and the “free market” can only yield piecemeal results, if that. People have come to understand that “free trade” treaties, extractive development, austerity politics and the global finance system chiefly serve an economic elite, not the common good. As cultural critic Douglas Rushkoff stated, “I’ve given up on *fixing the economy*. The *economy* is not broken. It’s simply unjust.”

Struggle for change within conventional arenas can often be futile, not just because electoral processes are corrupted by money, but because state bureaucracies and competitive markets are structurally *incapable* of addressing root cause. The disappointing Paris climate change agreement (a weak commitment after a generation of negotiations) underscores the limits of what The System can deliver. These systems failures come at the very time that promising new modes of governance, communications and social organizing are exploding. Twenty years after the World Wide Web went public, decentralized, self-organized initiatives on open networks have started to out-perform both market and state – a reality that threatens some core premises of capitalism.²

The people developing a new parallel economy – sometimes by choice, sometimes by necessity - are neither politicians, CEOs or traditional experts. These are ordinary people acting as householders, hackers, organic farmers, citizen-scientists, worker cooperatives, community foresters, collectives, mutualists and commoners. Through network-based cooperation and community-based projects, millions of people around the world are managing all sorts of self-provisioning systems that function independently of conventional markets and state programs. Some of these new models include alternative currencies, co-operative finance and crowd-equity investments to reclaim local control, economic transition campaigns, Indigenous peoples’ initiatives to develop post-growth economies and growing movements to reclaim the city as a commons. For those with eyes to see, serious structural changes are underway.

The challenge facing members of the EDGE Funders Alliance is how to comprehend these tectonic shifts and develop a fresh vision with practical alternatives. EDGE has long focused on the need for a Just Transition that brings forth new configurations of fair, democratic and inclusive governance and provisioning.³ Still, the complexity of “system change” suggests that we need to explore better ways to make sense of innovation at the edge, and to leverage it more aggressively. Progressive foundations need new tools for identifying the most promising opportunities, reinventing funding processes, and collaborating more closely with vanguard thinkers, activists, policy innovators and communities advancing systemic alternatives on the ground.

Portrait of a Paradigm Shift: The New Emerging from The Shell of the Old

If an old paradigm is indeed waning, then the ways in which we understand new patterns of action cannot continue to incorporate the views and vocabularies of The Old. Our discourse must slip the shackles of prevailing economic

¹ This document is an excerpt of a longer essay developed with generous support from the Heinrich Böll Foundation, Berlin, Germany. That essay can be found at www.edgefunders.org

² Jeremy Rifkin, *The Zero Marginal Cost Society* (Palgrave Macmillan, 2014); Yochai Benkler, *The Wealth of Networks: How Social Production Transforms Markets and Freedom* (Yale University Press, 2006).

³ See, e.g., Oscar Reyes, “Towards a Just Transition: Institute for Policy Studies Working Paper,” January 2016.

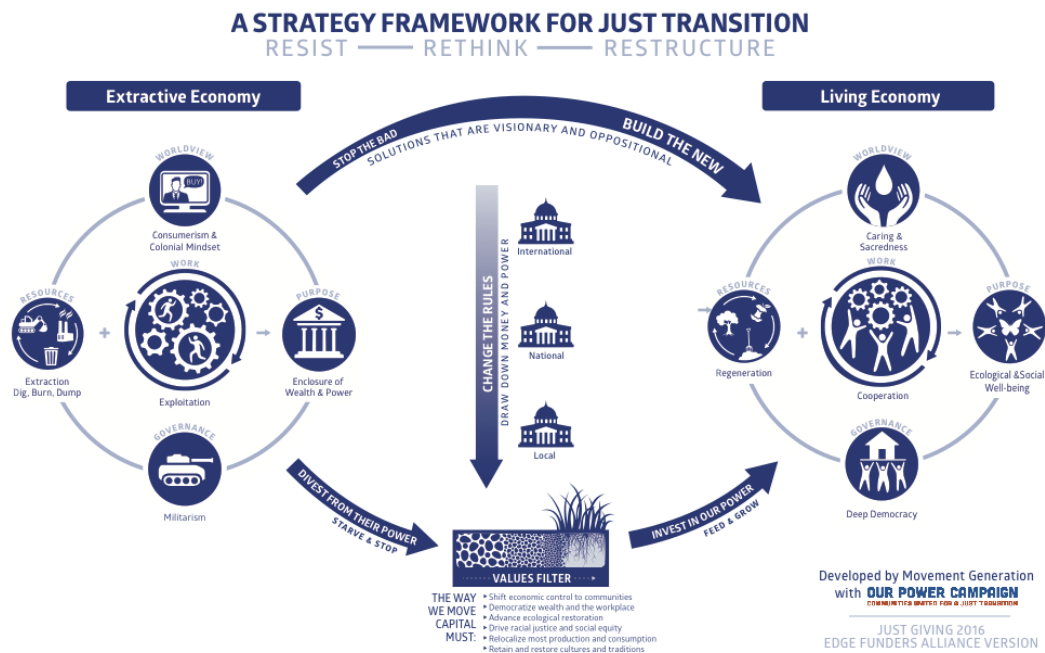
thought, such as the idea that money and wealth are identical; that the state and policy are the most important drivers of change; and that top-down, hierarchical structures, whether state or corporate, are the best systems for meeting society's needs.

The dominant narrative of contemporary politics and public life, free market economics, enshrines the primacy of unlimited growth as an indicator of progress, unfettered competition for selfish gain, individualism over community, and centralized hierarchies of control. Insurgent narratives attempting to challenge the neoliberal framework, tend to emphasize certain themes:

- Production and consumption for use, not profit;
- Bottom-up, decentralized decision-making and social cooperation;
- Stewardship of shared equity and pre-distribution of resources;
- An ethic of race, class and gender inclusivism, transparency and fairness;
- Community self-determination and place-making over market dictates;
- A diversity of models adapted to local needs.

If there is a common thread to be seen in the great variety of movements, it is that most system-change advocates assert a humanistic vision of society as a living, bio-diverse system. Countless social and moral economies stress the importance of *stewarding the earth* and all living systems; the *priority of people's basic needs* over market exchange; and the importance of *participation, inclusion and fairness* in successful resource management and community governance.

The Twelve Principles of Permaculture emphasize that the whole is greater than the sum of its parts, and that we cannot focus on any separate element in isolation. These principles complement the design principles for a successful commons identified by the late Professor Elinor Ostrom, who found that a “commons” approach succeeds because people are able to devise their own locally appropriate governance rules from the bottom up. A variety of movements around the world are now exploring similar ways to re-imagine governance – and their emergent articulations may provide useful guideposts to funders as they consider what types of projects will “break the frame” of the current system and advance sustainable alternatives.



Twin Strategies: Starve the Old -- While Building the New

A major problem in building a “new system” is that so many urgent contemporary problems must be addressed through the “old system” – at least in the short term. Yet it is equally clear that these systems will not self-reform by themselves or give rise to the transformational changes needed. Disruptive *external* catalysts and pressure are essential because “working within the system” tends to diminish both impetus and ambition for change. For a rough sense of the Big Picture, the infographic above depicts some strategic fronts in the struggle to Starve the Old and Build the New.⁴

Aligning resources for “Starving the Old” and “Building the New” means active, informed support for experimentation, outlier projects, deep conceptual thinking and analysis, movement strategy summits and cross-sectoral relationship building. It means supporting an expanding web of learning, new grassroots networks that help us see the limitations of existing paradigms while opening us up to alternative systems of knowledge and practice. This framework shifts the focus from individual project silos to the *web of relationships* among them, and to a larger vision of change.

Challenges for Philanthropy in Building the New

Building the New poses new challenges for traditional philanthropy because it can be quite difficult to step into the unknown. It’s not necessarily clear how to distinguish between credible and far-fetched plans, or to predict suitable timelines for “progress” -- or even how to define success in a world in which “failure” is often a necessary building block of learning. It can also be difficult to assess whether a proposed project truly advances system change, or whether it simply modestly improves things within existing structures. There are no definitive answers to any of these concerns, but it is important for grantmakers to ask these questions of themselves and grantees.

If we accept the premise that a new paradigm will be emergent, then the *process* of fostering a new world struggling to be born will be more a process of collaborative discovery and co-creation, rather than something that a handful of influential experts design in advance. Open networks have underscored the point that, much like the Earth’s ecosystems, change occurs through many interdependent agents operating in a holistic living system. Thus change-making needs to be highly participatory and collaborative - not just amongst change-agents, but in tandem with a larger web of grantmakers and institutional allies.

In light of these realities, the EDGE Funders Alliance has structured its 2016 Just Giving gathering to be less a conference than a facilitated assembly that actively engages all participants. Traditional workshops will be replaced by ongoing “engagement lab” discussions led by EDGE members and many inspiring civil society partners. The dialogue between grantees and grantmakers will aim to deepen a mutual understanding of Just Transition narratives and practice. The goal is to encourage learning from each other, and identify timely, strategic opportunities that promote systemic alternatives at the local, national, and international levels. We hope this leads to closer coordination in moving money for resourcing change.

⁴ This image was developed by Movement Generation Justice and Ecology Project with the Climate Justice Alliance’s Our Power Campaign.

"There's a time when the operation of the machine becomes so odious, makes you so sick at heart, that you can't take part. You can't even passively take part. And you've got to put your bodies upon the gears and upon the wheels, upon the levers, upon all the apparatus, and you've got to make it stop. And you've got to indicate to the people who run it, to the people who own it, that unless you're free, the machine will be prevented from working at all." ~ Mario Savio

Dear Friends,

During the heyday of the Free Speech movement in Berkeley in 1964 Mario Savio gave his famous, impassioned speech, with the above refrain capturing so well the spirit of that era.

At a recent EDGE conference members of our community called for a philanthropy "commensurate with the times in which we live." With growing devastation in parts of the world linked to the politics of oil, with the horror of refugee children dying at sea or languishing in camps, with global warming impacting us even sooner than anticipated, with the rise of nationalism, racism and political demagoguery at our highest levels of political discourse, with revelations of economic depravity stretching from around the world to Panama and beyond, the "operation of the machine" is again coming clearly into view and, one senses, into the center of our concerns.

A dictionary definition of "leading edge" has it as "the most important or advanced area of activity in a particular field." As EDGE Funders we like to imagine that we are, along with allied grantmakers and donor networks, on the "leading edge" of philanthropic change. For us, this means being committed to a global social change philanthropy that sees equity and justice as critical to furthering sustainable international well-being for all. It means understanding that humanity's challenges are systemic, and that philanthropy must address root causes of the interconnected crises we face. It means seeking to promote greater equity and sustainable practice today, while working towards deep social transformation over the long term. In this sense of the term we like to imagine - and see increasing evidence - that the broad community of leading edge funders and donors is growing, in and outside of our own EDGE Funders Alliance.

Over the past year we have with our members undertaken a number of efforts intended to further the "leading edge" values and agenda alluded to above. Highlights include:

- **EDGE Europe** - Two dozen representatives of foundations and funder support groups including Ariadne, Philanthropy for Social Justice and Peace and the Forum for Active Philanthropy gathered last summer at Fondation Charles Léopold Mayer/FPH's agro-ecological farm and retreat center near Paris. Funders there formally launched EDGE Europe as a community working together on issues of importance to funders on the continent while building bridges with funders in the US and elsewhere within the EDGE family. Tobias Troll was hired at the end of the year as Director, and opened an office at the Philanthropy House in Brussels to develop the network.
- **COP 21 Funders Initiative** - Together with the Climate and Energy Funders Group, the Environmental Grantmakers Association, the European Foundation Centre, the Centre Français des Fonds et Fondations as well as individual foundations, EDGE helped organize activities for more than a hundred foundation leaders at the UN climate summit in December, focusing on lifting up the voices and movements of those calling for "system change, not climate change" in and outside of the negotiations.
- **Building Equity and Alignment for Impact Initiative** - The BEA-I is a grassroots-led initiative launched by The Overbrook Foundation three years ago that includes the active participation of large, national groups and funders, with the goal of building alignment among the three sectors while more equitably resourcing a larger, more powerful movement capable of meeting the most critical environmental issues of our time. EDGE was among the founding partners of this effort and serves, along with other philanthropic, grassroots and green group partner representatives, on the "Weavers" steering group of the BEA-Initiative.
- **Just Transition Co-Learning and Strategy Development Collaborative** - Inspired by thinkers, innovators and resilient communities around the world, we have recently launched a Just Transition Collaborative, with support and leadership from The Chorus Foundation, The Overbrook Foundation, Fondation Charles Léopold Mayer/FPH and the Heinrich Böll Foundation. We have been helped and inspired too by allied movement partners such the Climate Justice Alliance, the Commons Strategy Group and others, most importantly Movement Generation Justice and Ecology Project, which helped lead a Just Transition Learning Retreat for two dozen funders last fall, and whose framing of just transition principles has helped guide our work over the last few years. As this work builds over the coming year it will encourage and enable funders to learn from, engage with and provide support to community-based movements and movement-support organizations working to build systemic economic alternatives at local, national and international levels. Ananda Lee Tan is helping guide this work.

- **Gender Justice Initiative** - EDGE members in Europe, the US and Latin America have built on the legacy of Gender Caucus efforts organized in past years within Grantmakers without Borders, to develop this emerging project to help ensure that gender justice frames and concerns are thoroughly integrated into EDGE's own work, and into philanthropy across sectors around the world.
- **Just Giving 2015 Conference** - Held in Baltimore with over 200 participants under the title *Better Not More - Principles and Practices for the Next Economy*, last year's gathering focused on "Decommodifying Nature, Reimagining Work, Liberating Knowledge and Democratizing Wealth." Participants noted the importance of having such a space to engage in discussions of philanthropy's role in contributing to deeper social and economic change, and while not everyone uses the terminology, the basic notion of the need for a Just Transition to a different kind of political economy seemed to resonate with those in attendance.
- **Film Projects** - A short film produced with our partners at Kontent Films in 2014, *How We Live: A Journey Towards a Just Transition*, has been shown in numerous film festivals and was viewed online over 25,000 times last year. *Better Not More*, depicting "principles and practice towards the next economy," premiered at and helped frame our Just Giving 2015 in Baltimore, and Kontent has produced a two minute film, *Build the New: Resourcing Change for a World in Transition* to introduce our 2016 conference in Berkeley. Independently, we have assisted Kontent Films in the production of a major and important feature-length documentary, *Not Without Us*, which movingly portrays the work of climate justice partners linking their local activism and public advocacy on the road to the Paris COP.
- **EDGE Membership** - Over eighty foundations are formally part of the EDGE community, contributing support through dues and grants. We have developed a new website, membership directory and communication tools; and established an office in New York. Membership and engagement in our community is expected to expand over the coming year, particularly in Europe, but in other parts of the world as well.

With the support and active engagement of our members and the wider community, as well as civil society and movement leaders around the world, we continue efforts to stress the importance of the global context on work at all levels and the key role played by the grassroots organizing sector in building communities that are both sustainable and just, while encouraging philanthropy to look beyond short term impacts to address deeper systemic causes of our ongoing social, ecological and economic crises. Over the coming year we will convene interested members at the next EDGE Europe Membership Retreat near Paris (July 8-10), at the 2016 World Social Forum in Montreal (August 8-12) and at the 5th International Degrowth Conference in Budapest (August 30-September 3). We will also begin working with European members in planning for our 2017 Just Giving Conference in Barcelona (end of April).

Our Gender Justice Initiative members will work with other funder affinity groups to support funders attending the 2016 AWID Forum in Brazil (Sept 8-11) as well, and we will of course also continue to develop and support various internal working groups and initiatives led by our members, and engage with colleagues within allied foundations and funder affinity groups across the philanthropic landscape.

Involvement and financial support by our members makes all of these initiatives possible, fueling the important work that is energizing and breaking new ground in our collective efforts to remain on the leading edge of a philanthropy commensurate with the global challenges we face.

Your active engagement within the EDGE Funders Alliance is greatly appreciated.

Mark Randazzo
Executive Director